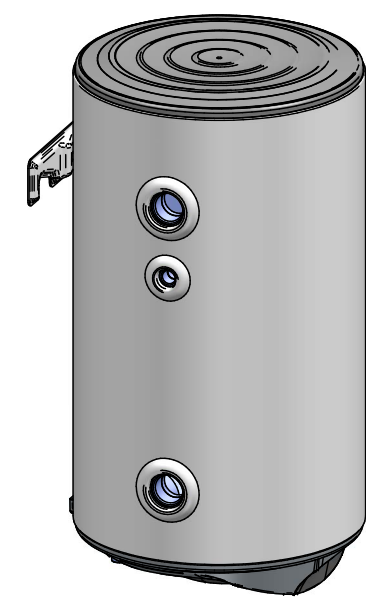
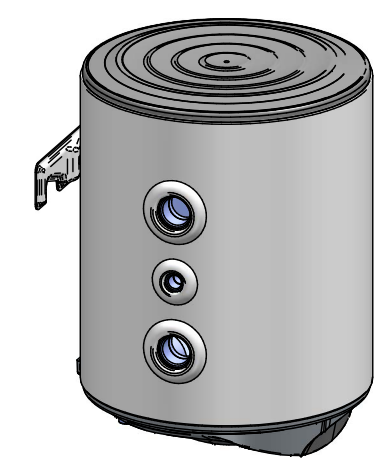


BUFFER TANK				
TECHNICAL DATA				
Model	...	BCE03039	BCE05039	BCE08039
Volume range	L	30	50	80
Energy efficiency class	...	C	C	C
Standing loss heat	W	46	53	61
Rated pressure	MPa	0.6	0.6	0.6
Volume	L	29	45	75
Working temperature min/max	°C	5 / 95	5 / 95	5 / 95
Insulation thickness	mm	33	33	33
Weight	kg	15	20	28
CONNECTIONS				
1: Inlet / drain		G 1/2 M	G 1/2 M	G 1/2 M
2: Outlet		G 1/2 M	G 1/2 M	G 1/2 M
3: Inlet / outlet		4 x G1 1/4 F	4 x G1 1/4 F	6 x G1 1/4 F
4: Flange with thermosensor tube and anode		Yes	Yes	Yes
5: Socket for thermostat		G1/2 F	G1/2 F	G1/2 F
DIMENSIONS				
H	mm	535	735	1100
H1	mm	195	395	760
H2	mm	-	-	365



BCE05039



BCE03039